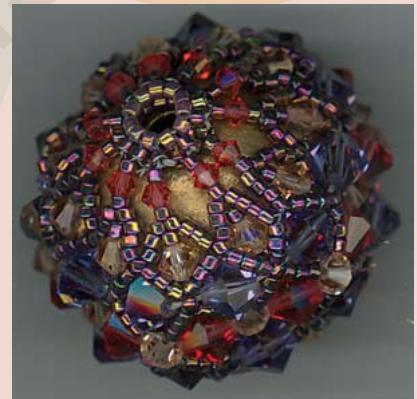
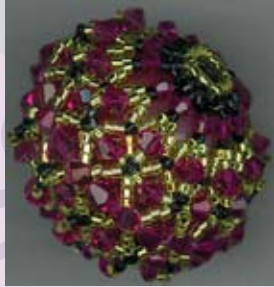
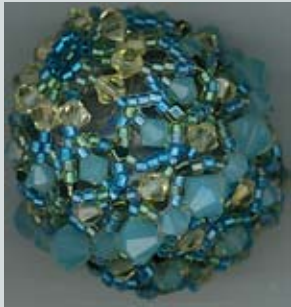
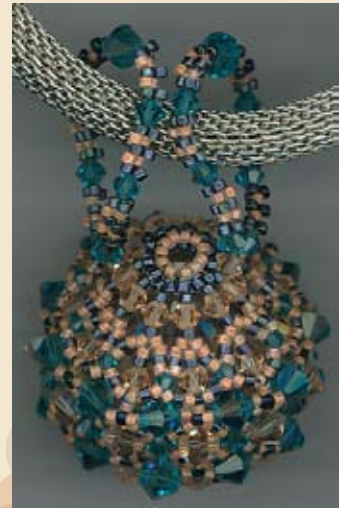


Beaded Bead Brigade Series #2



Supply List

7 grams	MC = main color Cylinder Bead
4 grams	AC = alternate color Cylinder Bead
50	4mm bicone crystal
10	6mm bicone crystal
20	3mm bicone crystal
1	25mm wooden bead

Legend



Steps



Noteworthy



Check



Bright Ideas



Thread direction



Inspector

1) Thread two #12 needles on 2 wingspans (approx 9') Fireline 6#
Place a #12 needle on each thread end leaving 6" tail thread

2) String (1) 4mm crystal, position to thread center

3) String as follows:
Left (3MC, 1AC, 3MC) = 7 beads
Right (3MC, 1AC, 3MC) = 7 beads



Note: 1 Set = steps 3 thru 7

Alternate Color (AC) is a visual aid for placement of "Point" bead that will be referred to in netting steps. Netting consists of odd numbers, relative to crystal size, (i.e., 6mm = 9, or 7 bead net, 4mm = 7 or 5 bead net, 3mm = 5 or 3 bead net)

4) Pass both needles in the same direction up thru 6mm crystal



5) Position thread **Left** and **Right** on either side of 6mm - **do not criss-cross thru 6mm!**
Fold 6mm thread side towards 4mm, hold threads and 6mm firmly in place

6) Pass **Left** needle up **left** side of bead set,
Pass **Right** needle up **right** side of bead set (notice thread by-passes 6mm)
Gently tighten **Left** and **Right** thread sides; vertically aligning the set



Check thread position



Thread (1) 4mm **criss-crossing**
Left and Right thread positions
Gently tighten both sides centering
bead set

Repeat Steps
3 thru Step 7
Complete 9 Sets

(The number of sets completing the focal bead ring is determined by: the size of crystals and focal bead being covered)

Check thread position

Join ring with final set:
Repeat Steps 3 thru 6 **criss-crossing** first 4mm strung



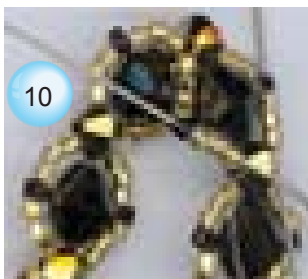
Pass focal bead thru ring
Fit will be very loose; If snug, tension
may be too tight; add additional sets

Beaded Bead Brigade #2 design is based on a focal bead circumference
By increasing size, number and surrounding beads, the possibilities are endless.

Needle **Left** and **Right** threads following thread path 1 full circle
around exiting Left and Right side AC

2 Needle technique ends here!

Remove needle and secure either Left or Right thread side
as non-working thread.



- 11 From AC bead
String:
(1MC, (1) 4mm crystal, 1MC)*
Pass thru next AC bead
*Repeat Sets between each AC bead in the ring
Pass thru first set, needle to next AC bead



Tension is moderate throughout
For "high tension" beaders, the end-cap steps require more tension.

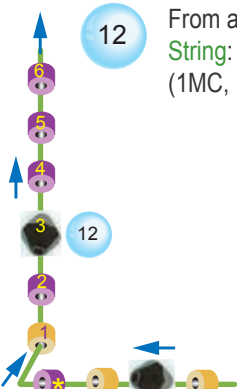


- Position ring over focal bead
Gently position ring to center of focal bead
This sets the tension, it must be loose. Remove focal bead and continue.
DO NOT tighten tension!



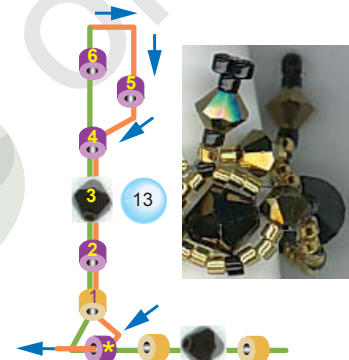
- 12 From an AC bead
String:
(1MC, 1AC, (1) 4mm crystal, 3AC)* = 6 beads

Circular thread path around AC pivots sets.

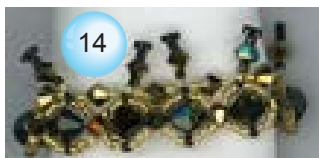


- 13 Skip AC 6 and 5
Needle down to and thru next AC 4

Continue thru 4mm crystal, 1AC, 1MC
Needle thru the back of initial AC in ring
Needle thru (MC, 4mm Crystal, MC)
Exit next AC



- 14 *Repeat steps 12 and 13 around the ring
Exit next AC

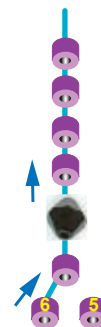
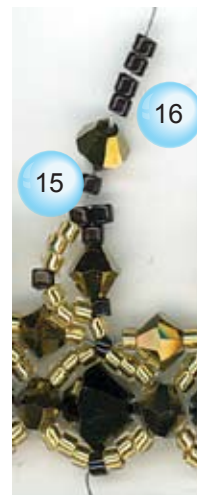


Check tension and fit

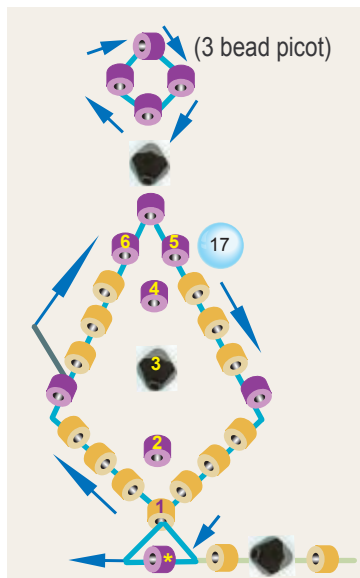
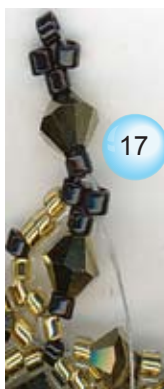
- 15 From AC position needle up, and thru first MC 1
String:
(3MC, 1AC, 3MC) = 7 beads
Needle up to, thru, and exit AC



- 16 From AC position 6
String:
(1AC, (1) 3mm crystal, 4AC) = 6 beads





- 17 From top of Set (3 bead picot)
Skip 3 AC
Needle down to and thru 3rd AC
Continue thru 3mm crystal, and next AC

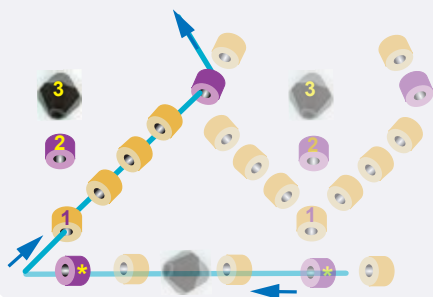


- 18 From AC position 5
String:
(3MC, 1AC, 3MC) = 7 beads
Needle down to and thru 1

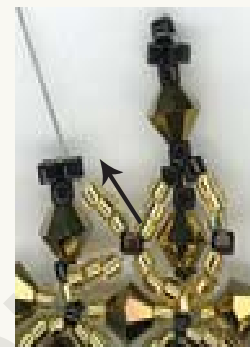
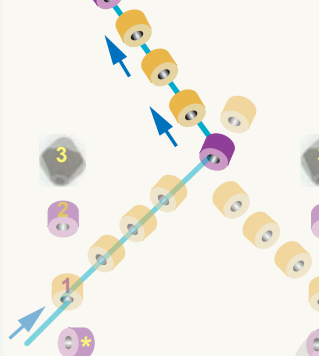


Needle to, thru, and exit AC Proceed to Step 19 (next page)

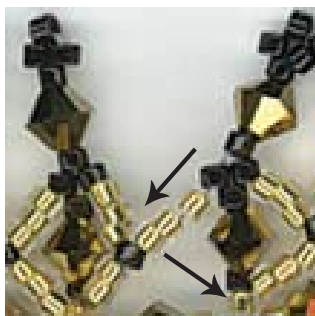
19 From AC  needle up thru MC # 
String: (3MC)
Needle up to, thru, and exit AC





20 From AC
String: (3MC)
Needle up to, thru, and exit AC





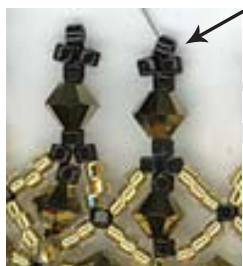
21 From AC
*Repeat Steps 16 thru 20
Complete 9 sets
Exit AC



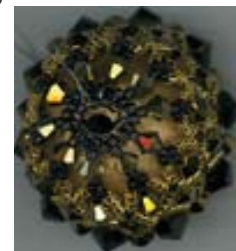
22 Join Set 9 and Set 10 at AC
String: 3MC
Needle down to, thru, and exit next AC
String: 3MC
Needle down to, thru, and exit MC  from Set 9
Needle to, BACK thru, and exit AC 



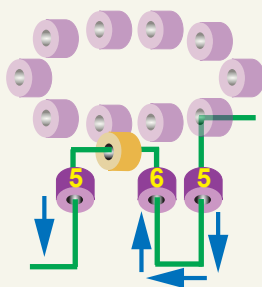
23 From AC 
Needle up to, thru MC 
Continue upward thru Set (AC, 3mm Crystal, AC), and next Set
Exit AC at top of Set Picot)






24 From AC at top of Set
Pass needle thru each AC at top of Set, forming a circle
Keep tension moderate
Pass thru circle a second time
Insert focal bead in bead cap
Set tension
Pass thread thru circle a third time
Exit any AC at top of Set



25 From AC at top of Set
Pass needle down thru AC
Pass up thru next AC
String 1 MC and pass down thru next AC
Keep tension consistent
Complete round (= 10 MC's)
Exit any bead cap MC



 As promised for "high tension" beaders, the end cap requires increasing tension, and a good tug to complete!

26 Pass needle thru bead cap points, forming a circle
Pass thru again, increasing tension; taking up thread slack
Place focal bead in ring and position bead cap over bead opening
Increase tension, pull tightly
Pass thread thru circle three more times
 Complete Side One by securing and ending working thread.
 Focal bead remains in ring, proceed to Side Two

Side Two:
Repeat
Steps 11 thru 26